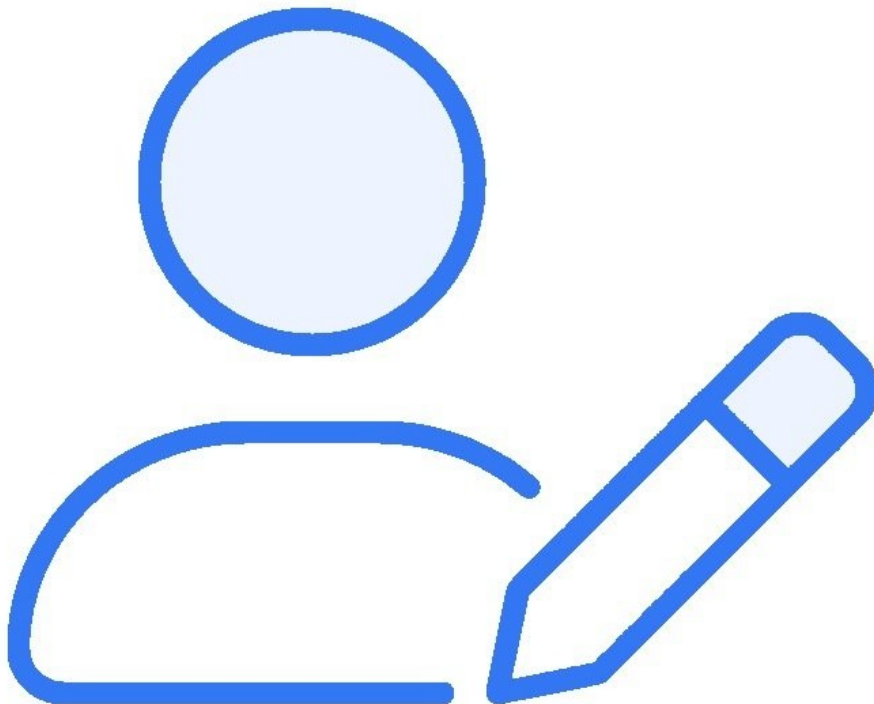




How to Set Page Permissions

Every wiki and guide has a patrol threshold...

Written By: iRobot



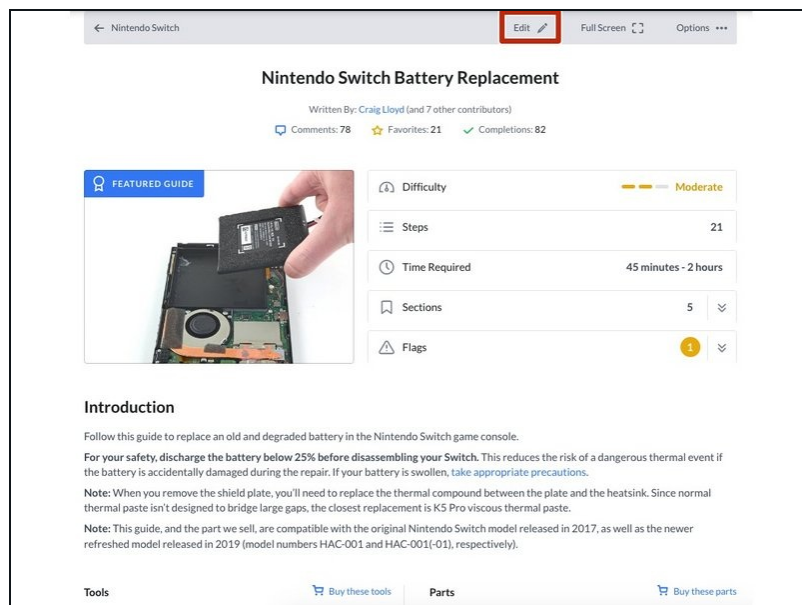
INTRODUCTION

Every wiki and guide has a patrol threshold. This can be set to determine how much reputation is required to edit the page without patrol. If someone with a low reputation other than the page creator or a member of the creator's [team](#) edits the page, the edits are not immediately visible, but only if you choose to see "the latest unverified version".

An admin or user with enough [reputation](#) must approve the edits before they are included in the "verified version" of a guide or wiki.

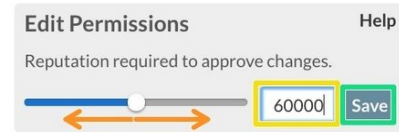
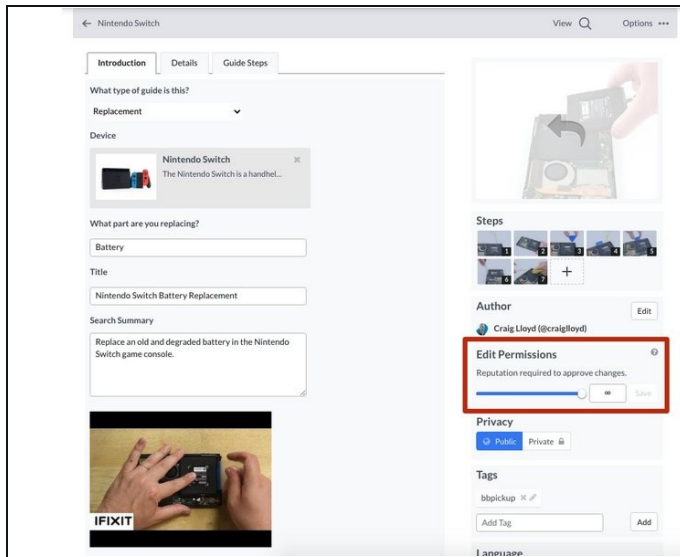
This guide demonstrates how page creators can set page permissions for all page types.

Step 1 — Open Page Edit



- Open the page you want to change and click on the **Edit** button on the upper-right of the page.

Step 2 — Permissions Section



- Scroll down the page and locate the **Edit Permissions** section on the right side of the page. **Edit Permissions** allows you to determine the minimum reputation necessary for automatic acceptance of a user's updates.
- Use the **Sliding Meter** to select a Reputation threshold for a user's edits to be automatically accepted.
- You can also type in a **Specific Number** in the text box.
 - ① Explanation of Permission Values:
 - 0 - No minimum value, no edits require reputation for immediate acceptance
 - # - Edits from people with reputation below # require patrolling for acceptance (unless made by the guide creator or a member of the creator's team)
 - ∞ - All edits must be patrolled for acceptance, unless made by authors or admins.
- Click **Save** to apply the new Permission threshold for the page, then click **Save** at the bottom of the editing page to commit the changes to the page.

Step 3 — The number you set for the patrol threshold is the amount of reputation required to freely edit the page.

If a page has submitted edits that are under review through Patrol, an unverified version of that page (including all recent pending edits) is available for viewing through a link at the top of the page:

This document has more recent changes. Switch to the latest [unverified version](#).

When viewing the Unverified Version, users will always have the option to return to a verified snapshot of the page, which does not include any pending edits.

This version may contain incorrect edits. Switch to the latest [verified snapshot](#).

- If the patrol threshold is set to 1,000, a user with 1,500 reputation could edit the page and it would immediately go live on the site. If someone with 500 reputation points made an edit, their edit would be held for review.
- Until the edit is approved, whenever another person goes to view that page there would be a link at the top that lets them view either the latest version with "Unverified edits" or the "Last verified snapshot."
- At the same time, these changes are added to the patrol edits page. Experienced users (or admins) can then come along and 'patrol' these proposed changes, approving and denying them as deemed appropriate.