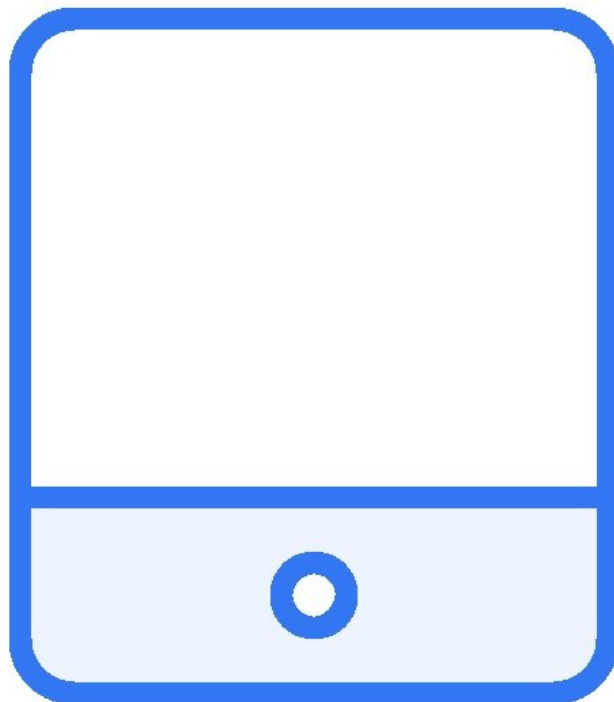




How to Create a Device Category

This guide demonstrates how to create a device...

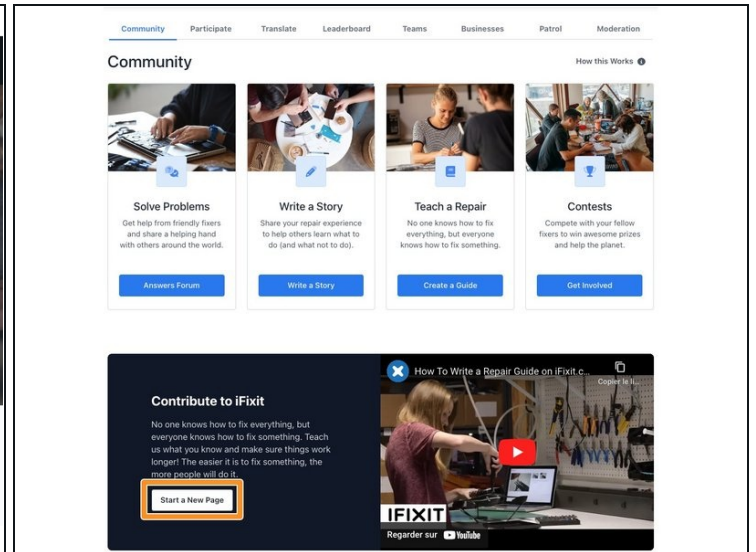
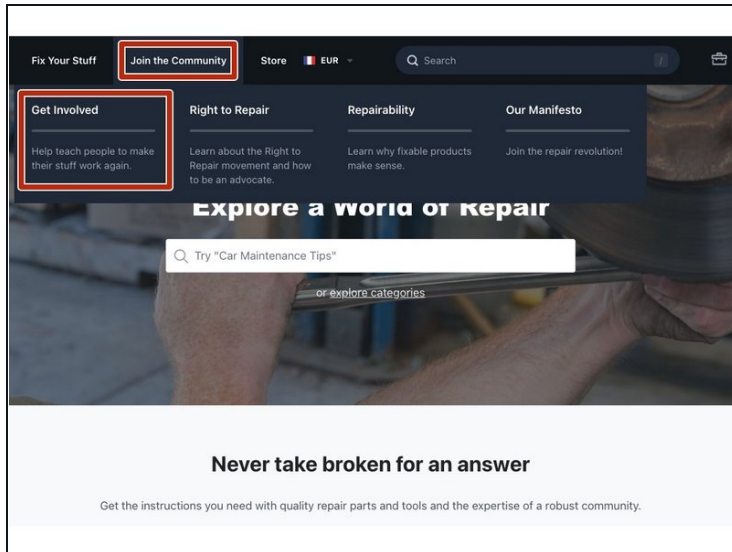
Written By: iRobot



INTRODUCTION

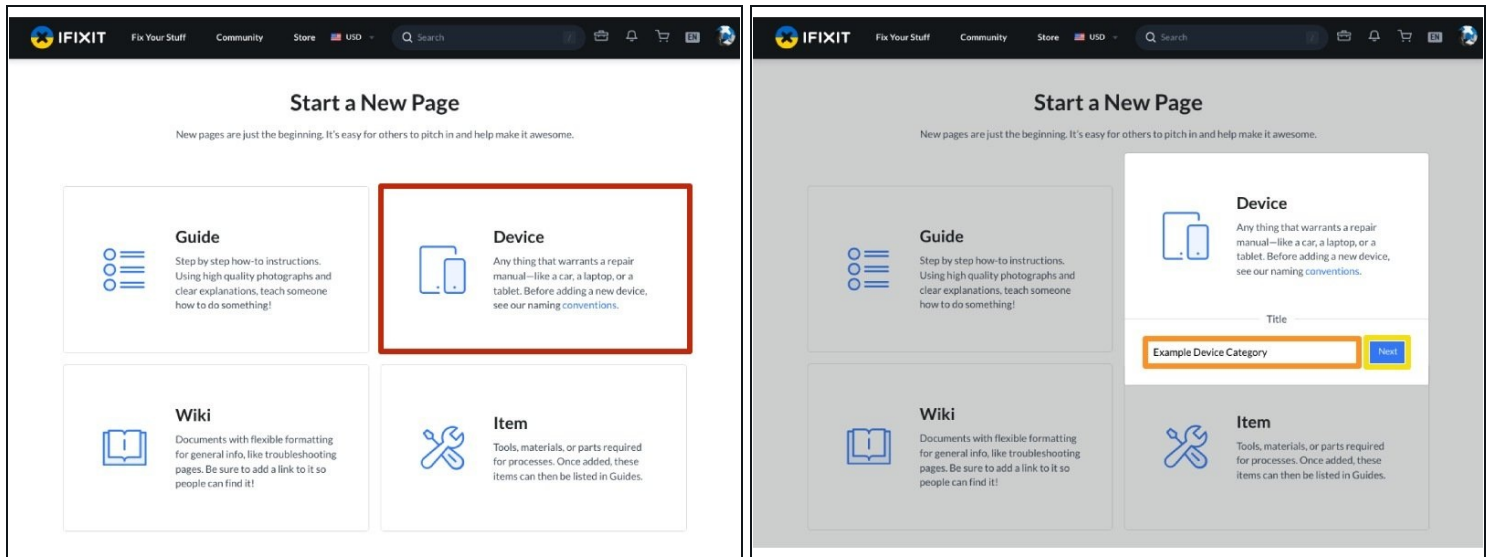
This guide demonstrates how to create a device category page.

Step 1 — How to Create a Device Category



- Starting on the home page, hover over **Join the Community** and then click on **Get Involved**.
- From the Community page, click on the **Start a New Page** button.

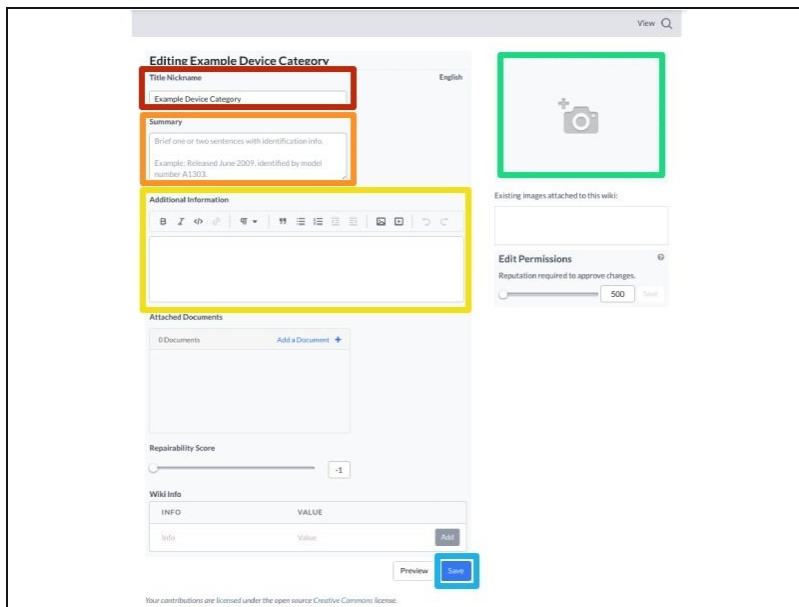
Step 2



- Select **Device** from the page options list.
- Enter the **Title** for the new device category page.
- Click **Save** to create the page.

⚠ *Choose the title carefully. Once you create your Category page, you can change the **Display Title**; however, the name you select now will be the **permanent** page title that will always appear in the page URL.*

Step 3



The screenshot shows the 'Editing Example Device Category' form. The form is divided into several sections, each highlighted with a colored box:

- Title Nickname:** A text input field containing 'Example Device Category'.
- Summary:** A text input field containing 'Brief one or two sentences with identification info. Example: Released June 2009, identified by model number A1303'.
- Additional Information:** A large text input field with a rich text editor toolbar.
- Attached Documents:** A section with '0 Documents' and an 'Add a Document' button.
- Reputability Score:** A slider control set to -1.
- Wiki Info:** A table with two columns: 'INFO' and 'VALUE'. It contains one row with 'Info' and 'Value'.

Other visible elements include a 'View' button, a language dropdown set to 'English', a 'Header image' placeholder, 'Existing images attached to this wiki', 'Edit Permissions' (set to 500), and 'Preview' and 'Save' buttons at the bottom right.

- Edit the title of your Category Page here.
⚠ This will not change your URL.
- Add a **Summary** for the page.
 - ① This text will appear in the top banner displayed on the page. (It will also appear on search engine results.)
- Add any **Additional Information** to your category page.
- Add a header image using the [Media Manager](#).
- ★ Review the [Parts of a Category](#) page to better understand the above elements.
- Click **Save** and view your category. The next step will be to [Organize Your Device Category Page](#).